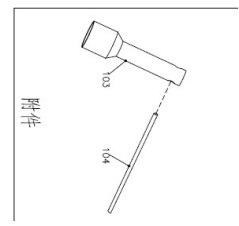
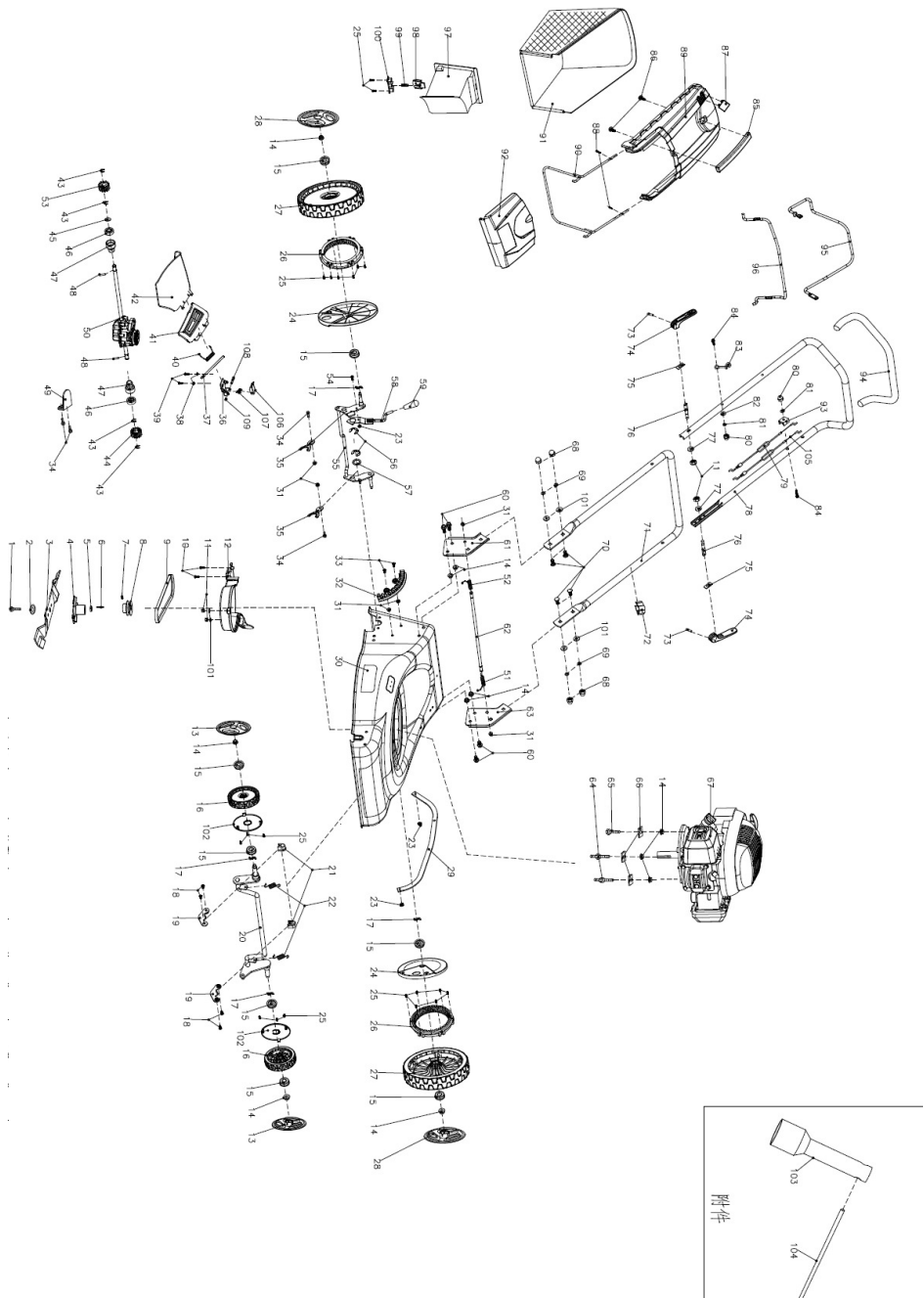


CORTACÉSPED CAMON DYM1720C

DYM1720C Petrol Mower Part List -- GAIMA

Model: DYM1720C		Date: 2019-1-4		
NºFig.	Old System P/N	New System P/N	Descripción(EN)	Qty (pcs)
1	26800606201	A26800606201	blade tighten bolt	1
2	26300107302	2105300001C	dish washer	1
3	26300155101	2105200213A	blade	1
4	26300148301	2105300020B	blade support	1
5	26900209601	2105400027A	blade support lining sheath	1
6	26809004101	A26809004101	flat key	1
7	26800300502	A26800300502	inner hex screw	1
8	26300401101	2102300116B	driving pulley	1
9	25100127202	2102600018N	triangle belt	1
10	26800103701	A26800103701	self-tapping screw	2
11	26800508001	A26800508001	hex locking nut	1
12	25288400102	21041002600001	belt protective cover	1
13	23600301901	21011001490006	wheel cover	2
14	26800502801	A26800502801	hex flange locking nut	11
15	A26800401601	2101300065A	bearing	8
16	25400204001	21011002600001	wheel assy	2
17	26800706202	A26800706202	wave washer	4
18	26800201901	A26800201901	tooth screw	4
19	26300134202	2101200011B	fixing board for wheel axle	2
20	2101500068D	2101500068D	front wheel axle assy	1
21	25202600101	21011000290001	fixing ring for front wheel axle	2
22	26801110001	2109800049B	tension spring for front wheel	2
23	26800500501	A26800500501	hex locking nut	3
24	25208700105	2101100370001	dust-proof wheel cover 11"	2
25	26800100501	A26800100501	self-tapping screw	20
26	25229500101	2101100081B	wheel gear ring	2
27	25400204101	21011002610001	wheel assy	2
28	26300302001	21011001500006	wheel cover-13	2
29	26300133402	2106200153D	connecting rod	1
30	23600144802	21035000550002	deck	1
31	A26800502401	3032306001	self-metal hex flange locking nut	6
32	23100103202	2106400169401	right adjusting board	2
33	26800202001	A26800202001A	tooth screw	4
34	26800611201	A26800611201	hex flange nut	4
35	26300107001	2101200017B	axis lock	2
36	2103200228A	2103200228A	side-discharge fixing board	1
37	26200101901	2106200053N	side-discharge position axle	1
38	26800800402	A26800800402	spring washer	2
39	26800201501	A26800201501	tooth screw	4
40	26801113004	2109800056D	side cover board spring	1
41	25231100102	21061000900001	side-discharge cover board	1
42	21041001110001	21041001110001	side-discharge protection cover	1
43	26800900201	A26800900201	split washer	4
44	2104400013E	2104400013E	left output gear ass'y	1
45	2101900009A	2101900009A	sleeve	1
46	26800402302	A26800402302	bearing	2
47	26900203001	2102400152A	bearing sleeve	2
48	26809000102	A26809000102	column pin	2
49	2102200059A	2102200059A	position board	1
50	23050203502	2102300063B	gear box	1
51	26801112601	2106800007A	left knob spring	1
52	26801112701	2106800006B	right knob spring	1
53	26800300203	A26800300203	right output gear ass'y	1
54	26800203001	A26800203001A	screw	1
55	2101500121B	2101500121B	rear wheel axle assy	1
56	26800900301	A26800900301	split washer	2
57	26300107601	2109200020A	adjusting washer	1
58	2106300079A	2106300079A	handle assy	1
59	21021000010182	21021000010182	handle sheath	1
60	268006040101	A268006040101	hex flange bolt	1
61	23601016301	21062004490002	right handle bracket	1
62	26300165601	2101300006A	ion rod	1
63	23601016201	21062004480002	left handle bracket	1
64	26800305901	A26800305901	special bolt	2
65	26800612801	A26800612801	hex bolt	1
66	2103300032A	2103300032A	square washer	3
67	H203100252A	H203100252A	nut(Euro V)	4
68	A26800501502	3033302001	cap nut	4
69	26800800202	A26800800202	spring washer	4
70	26800601903	A26800601903	half-round square neck bolt	4
71	21063001720001	21063001720001	lower handle	1
72	25261100102A	21061000013201	cable clamp	1
73	26809004801	A26809004801A	column pin	2
74	21061006500002	21061006500002	locking handle	2
75	26300142002	2106200001A	pressing plate	2
76	26300124501	2106300008A	locking handle bolt	2
77	26300118902	2109200029B	flat washer	2
78	21062002740001	21062002740001	upper handle	1
79	29100124801	2106800009B	flame-out cord assy	1
80	26800501603	A26800501603A	cap nut	2
81	26800800303	A26800800303	spring washer	1
82	26800700801	A26800700801	flat washer	2
83	26300168401	2106300002A	cable hook	1
84	A26800607701	3091307003	hex flange bolt	2
85	21071000050001	21071000050001	grass catcher handle	1
86	26800104601	A26800104601A	self-tapping screw	1
87	21071000080002	21071000080002	level indicator	1
88	26800103202	A26800103202	self-tapping screw	2
89	2527300101	2107100007208	grass catcher cover	1
90	26300312901	2107200071A	grass catcher bracket	1
91	21077000462188	21077000462188	grass catcher	1
92	23000450701	2100X00643	rear cover	1
93	25233600102	21061000043201	cord fixing block	1
94	25600102801	2106100319A	handle sheath	1
95	21063002640001	21063002640001	driving pole	1
96	23601008401	21062003680002	flame-out pole	1
97	21061006910001	21061006910001	mulching kit	1
98	21041001150182	21041001150182	mulching kit button	1
99	26801100501	2109800022C	spring	1
100	25231700101	21041001160001	knob pressing board	1
101	26800700701	A26800700701	flat washer	6
102	25287100101	21011001460001	dust-proof wheel cover	2
103	26300107801	2012200002A	socket wrench	1
104	26300107901	2012100004A	wrench pole	1
105	2106800654A	2106800654A	driving cord assy	1
106	2103200233A	2103200233A	locking block B	1
107	2103800011A	2103800011A	locking block spring	1
108	2103300040A	2103300040A	locking block fixing axle	1
109	3043301003	3043301003	split washer	1



附件